



Year 1 Curriculum Overview 2022—2023



	Autumn 1	Autumn 2	Spring 1	Spring 2	Summer 1	Summer 2
RE	Families Belonging	Waiting Judaism	Special People	Meals Change	Holidays & Holy Days Neighbours, Islam	Being Sorry
English	Children will access a range of genre. SPaG and phonics (Jolly Phonics) will be taught both discretely and through cross-curricular work.					
Maths	Throughout the year the children will cover all areas of maths using a combination of Maths No Problem, NCETM, White Rose Maths and cross-curricular activities.					
Science	Everyday Materials		Animals inc. humans		Seasonal Changes	
Computing	E-Safety (age appropriate)	Digital Literacy (logging on/off)	Programming (simple sequence)	E-Safety (image searches)	E-Safety (rules)	Programming (using a computer)
Art & Design	Observation line & colour	Observation line, colour & shape	Changing materials, experimentation & selection (textures & patterns)	Changing materials, experimentation & selection (imagination)	Different art forms Selecting appropriately	Different art forms Selecting appropriately (3D)
History	Distinguishing between past & present		Changes within living memory & their impact		Significant events, people & places in the UK	

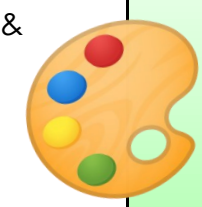




Year 1 Curriculum Overview (contd) 2022—2023






	Autumn 1	Autumn 2	Spring 1	Spring 2	Summer 1	Summer 2
Geography	Geographical language Observational language & skills (comparison of physical & human features)		Directional language Mapping		Areas of the world (countries & capitals of the UK) Aerial photographs Mapping	
Music	Singing simple songs from memory	Understanding pulse (body percussion)	Differentiate between pulse & rhythm	Play untuned percussion	Play tuned percussion	Explore dynamics (loud/quiet)
PE	Static Balance Gymnastics	Agility Games	Co-ordination Dance	Dynamic Balance Gymnastics	Balance, Agility & Co-ordination Athletics	
Design & Technology	Design & produce Imagination		Evaluate & produce Sliders & levers		Nutritional Value Produce	
PSHCE	Me & My Relationship	Rights & Responsibilities	Keeping Myself Safe	Being My Best	Journey in Love	Valuing Difference
Whole School PSHCE	<p>PSHCE Anit-Bullying Week, Fairtrade, Sunbeams, Emotional Health & Well-Being Week, CAFOD, hand-washing, The Rights of the Child and British Values.</p> <p>Health Education Being Safe, Physical & Mental Wellbeing, Physical Health & Fitness, Healthy Eating, Drugs, Alcohol & Tobacco, Health & Prevention and basic First Aid.</p> <p>Relationships Education Families & people who care for me, Caring Friendships, Respectful Relationships, Online Relationships, Managing Difficult Questions & the law & Internet Safety and Harms.</p> <p>RSE Journey in Love: Physical, Social, Emotional, Intellectual, Spiritual—see the RSE Curriculum Map (website)</p>					





Year 2 Curriculum Overview 2022—2023





	Autumn 1	Autumn 2	Spring 1	Spring 2	Summer 1	Summer 2
 RE	Beginnings Signs & Symbols Preparations Judaism		Books Thanksgiving Opportunities		Spread the Word Rules Treasures, Islam	
English	Children will access a range of genre. SPaG and phonics (Jolly Phonics) will be taught both discretely and through cross-curricular work.					
Maths	Throughout the year the children will cover all areas of maths using a combination of Maths No Problem, NCETM, White Rose Maths and cross-curricular activities.					
Science	Uses of everyday materials including changing materials		Plants		Living things and their habitats	
Computing	E-Safety—rules	Digital Literacy (navigation)	Programming (inc. repeat)	Digital Literacy (uses of computers)	Digital Literacy (animation)	Digital Literacy (save and retrieve) E-Safety
Art & Design	Observation & line & colour experimentation & application (colour mixing)	Observation & line & colour experimentation & application (line and shape)	Changing materials Making appropriate selections (texture & pattern)	Changing materials Making appropriate selections (2D/3D)	Features of different art forms (similarities & differences) Designing, planning & making 	
History	Using a range sources of information to understand key events in history		Significant individuals from the past (including impact)		Significant people & events beyond living memory	





Year 2 Curriculum Overview (contd) 2022—2023



	Autumn 1	Autumn 2	Spring 1	Spring 2	Summer 1	Summer 2
Geography	Areas of the world (UK, countries, continents and oceans)		Weather patterns, map work and connections		Location, human & physical features	
					Geographical & comparative language (contrasting non-European country)	
Music	Sing songs expressively from memory	Copy & create simple rhythmic patterns	Control pitch & dynamics using voice & tuned percussion	Use simple musical notation	Use & respond to musical instruments	Composition using storyboards
PE	Gymnastics Balance	Games Agility	Dance Co-ordination	Gymnastics Balance	Games Dynamic balance	Athletics Co-ordination
Design & Technology	Plan, design & construct a 3D model		Make simple mechanisms		Nutrition & healthy eating Packaging design	
PSHCE	Me & My Relationships	Keeping Myself Safe	Being My Best	Rights & Responsibilities	Valuing Difference	Journey in Love
 Whole School PSHCE	<p>PSHCE Anit-Bullying Week, Fairtrade, Sunbeams, Emotional Health & Well-Being Week, CAFOD, hand-washing, The Rights of the Child and British Values.</p> <p>Health Education Being Safe, Physical & Mental Wellbeing, Physical Health & Fitness, Healthy Eating, Drugs, Alcohol & Tobacco, Health & Prevention and basic First Aid.</p> <p>Relationships Education Families & people who care for me, Caring Friendships, Respectful Relationships, Online Relationships, Managing Difficult Questions & the law & Internet Safety and Harms.</p> <p>RSE Journey in Love: Physical, Social, Emotional, Intellectual, Spiritual—see the RSE Curriculum Map (website)</p>					